



Professional Signage Display - MON100

LCD Wall-mount Type with VESA Compatible

IPAD SERIES from sizes 15.6" to 98"

Wall Mount Application fields: public places, for example, shopping mall, restaurant, airport, square, commercial buildings, etc.

Outer shell is made of extra good quality metal material, which is painted by powder-spray craft work.

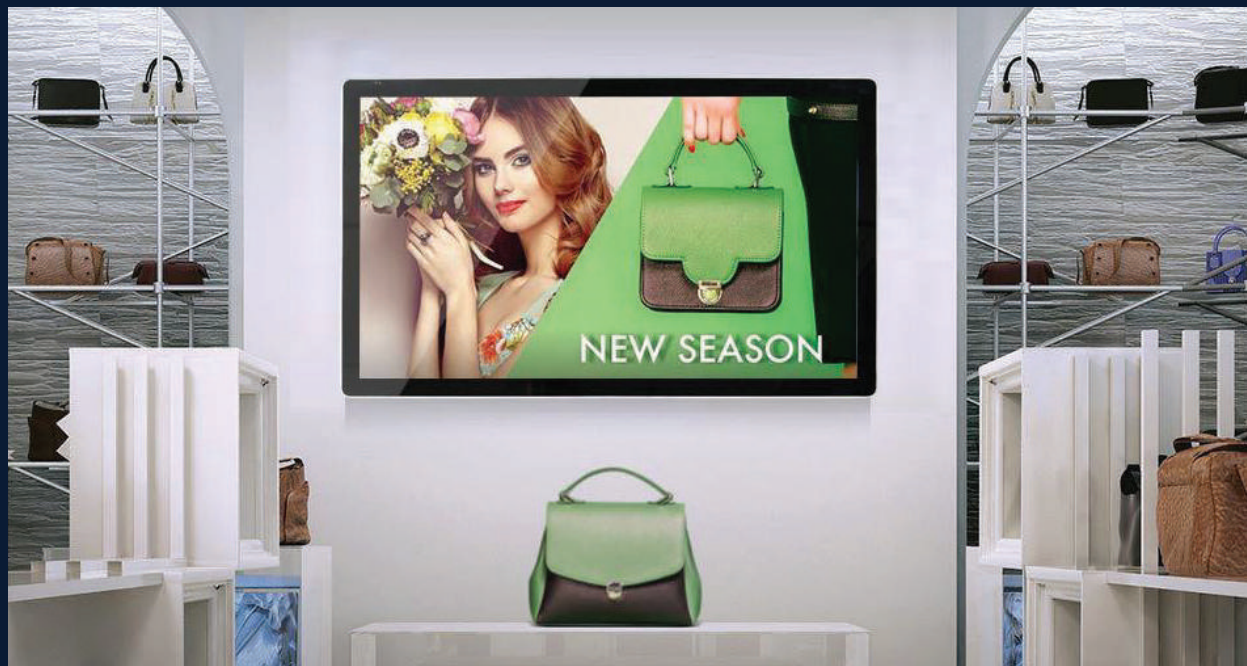
Fixing method: wall mounting or ceiling fixing.

This machine is of android OS design, which could be connected to internet, and supports remote office control.

Content plays automatically upon set up of schedule.

Easy connection to wifi.

MODEL: MON100 (non-touch) / MON100T (with touch)



Stylish Ultra-thin Structure
Metal Enclosure & Tempered Glass
Slim Wall-mount
SuperClear Full HD Display

Supports Android/Windows/Linux
Diverse Customization
Integrated with Signage Software

Monitor Display Specifications:

Technical Parameter for LCD Panel	Panel Size	15.6" – 98" real color LCD screen
	Panel	Original LG Panel A+
	Aspect Ratio	16:9
	Max. Resolution	Full HD (1920 x 1080) pixel
	Dot Pitch	0.74mm(H) x 0.74mm(W)
	Number of Color	16.7M
	Brightness	400cd/m2
	Contrast Ratio	3000:1
	Optional Touch Technology	Projective Capacitive Touch, Touch foil
	Responsive Time	5ms
	Panel Life	50 000 hours
Optional Media Player	OS	Andriod 7/ Windows 10
	CPU	Intel i3, i5 or i7 RK3188 RK3288, eight-core ARM Cortex A7 2.0 GHz RK3366
	GPU	Intel HD Graphic / ARM Mail-764
	RAM	Windows :8GB Android :4GB
	Built-in storage capacity	Windows : 128GB SSD Android:32GB
	WIFI	WIFI module+WIFI Antenna
	Video formats	MP4(AVI:DIVX/XVID),MPG2(DVD:VOB/MPG2), MPEG1 (VCD: DAT/MPG1)
Supported files	Audio formats	MP3
	Photo formats	JPG
	Scrolling Text	ROL(UNICODE)
	Input/output interface	USB, RJ45
	Main Hardware	Shell Material
Surface		Metal case with powder burning; Tempered glass to protect LCD panel
Speaker		2*10W built-in stereo speakers
Heat Dispersion		Built-in DC fans
Power	Standby	≤3W
	Working	30W-180W
	Power supply	AC 110V - 240V, 50/60HZ
Temperature	Storage	-7 to 65 Celsius degree
	Normal Working	-5 to 65 Celsius degree
OSD Language	English, Chinese, French, German, Italian, Spanish, Arabic	



Israk Solutions Sdn. Bhd (1289622-T)

No. 20, Jalan BP 6/13, Bandar Bukit Puchong, 47120, Puchong, Selangor



<http://www.israk.my>



info@israk.my



03-8966 2405